

WAHL CLIPPER CORPORATION  
World Headquarters  
P.O. Box 578, Sterling, IL 61081

Wahl (UK) Ltd.  
Herne Bay Trade Park  
Sea Street Herne Bay, Kent  
CT6 8JZ England


Wahl Australia Pty Ltd.  
PO Box 456  
Acacia Ridge QLD 4110  
Australia

Wahl India Grooming Products  
Pvt. Ltd.  
B-1002, 10TH Floor, B-Wing, Lotus  
Corporate Park,  
Off Jay Coach Flyover, Western  
Express Highway,  
Goregaon-East, Mumbai-400 063.

Wahl Clipper (PTY) Ltd.  
Suite L9 & L10  
Hingham Field Office Park  
79 Boeing Road East  
Bedfordview, Gauteng 2007  
South Africa

Wahl International Consumer  
Group B.V.  
Engelenburgstraat 36  
7391 AM Twello, The Netherlands

WAHL MEA FZCO  
Office #123, Building # 6E- A  
PO Box -371395  
Dubai Airport Free Zone, Dubai  
United Arab Emirates

WAHL Russia  
(ООО «Волл Рус»)   
Российская Федерация  
129164, Москва,  
Ракетный бульвар, 16  
info@wahlrus.ru

Wahl Argentina  
Av. Alvarez Jonte 5655  
Buenos Aires (C1407GPK)  
Argentina

Wahl Clipper Brasil  
Rodovia Geraldo Scavone, 2300  
UC 45, Pedregulho.  
Jacareí - SP. CEP: 12305490

Wahl GmbH  
Roggenbachweg 9  
78089 Unterkirnach,  
Germany

WAHL Spain  
Fernando Giner de los Rios 12  
46910 Sedavi  
Valencia, Spain

© 2018 Printed in China  
Wahl® is a registered trademark  
of Wahl Clipper Corporation

[www.wahl-consumer.com](http://www.wahl-consumer.com)

**WAHL**<sup>®</sup>  
HOME PRODUCTS

## WAHL Travel Shaver

MODEL/TYPE 3615



Part No. 3615-1070

# Accessories

Travel Shaver



Replacement Cutting Blade



Replacement Shaving Foil



Cleaning Brush

Travel Pouch



Charging Cable Types

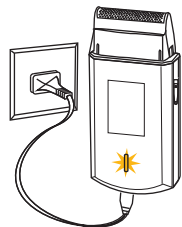
2-pin Plug



3-pin Plug

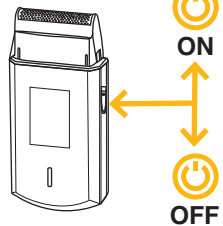


1

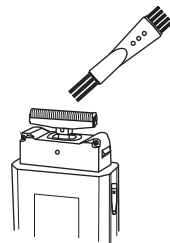


8 h = 45 min

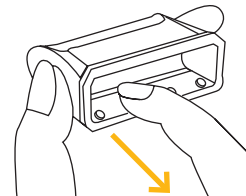
2



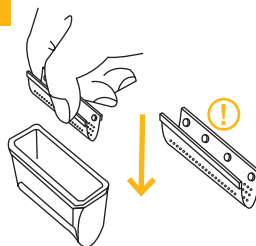
2



3



4



5

